



Energy Efficiency Rating

	Current	Potential
Very energy efficient - lower running costs		
(92 plus) A		
(81-91) B	83	
(69-80) C		
(55-68) D		
(39-54) E		
(21-38) F		
(1-20) G		
Not energy efficient - higher running costs		
England & Wales	EU Directive 2002/91/EC	

Environmental Impact (CO₂) Rating

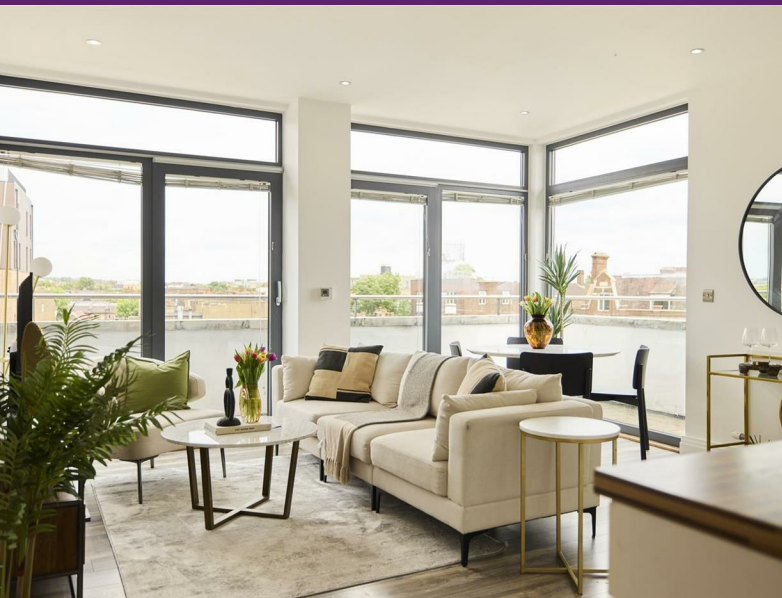
	Current	Potential
Very environmentally friendly - lower CO ₂ emissions		
(92 plus) A		
(81-91) B		
(69-80) C		
(55-68) D		
(39-54) E		
(21-38) F		
(1-20) G		
Not environmentally friendly - higher CO ₂ emissions		
England & Wales	EU Directive 2002/91/EC	

Manor Park Road, London, NW10 4JW

Asking Price £695,000

Subject to Contract

- Penthouse apartment with two balconies in new development
- Three double bedroom apartment
- Three bathrooms, two of which are en suite
- Contemporary style kitchens
- Two balconies

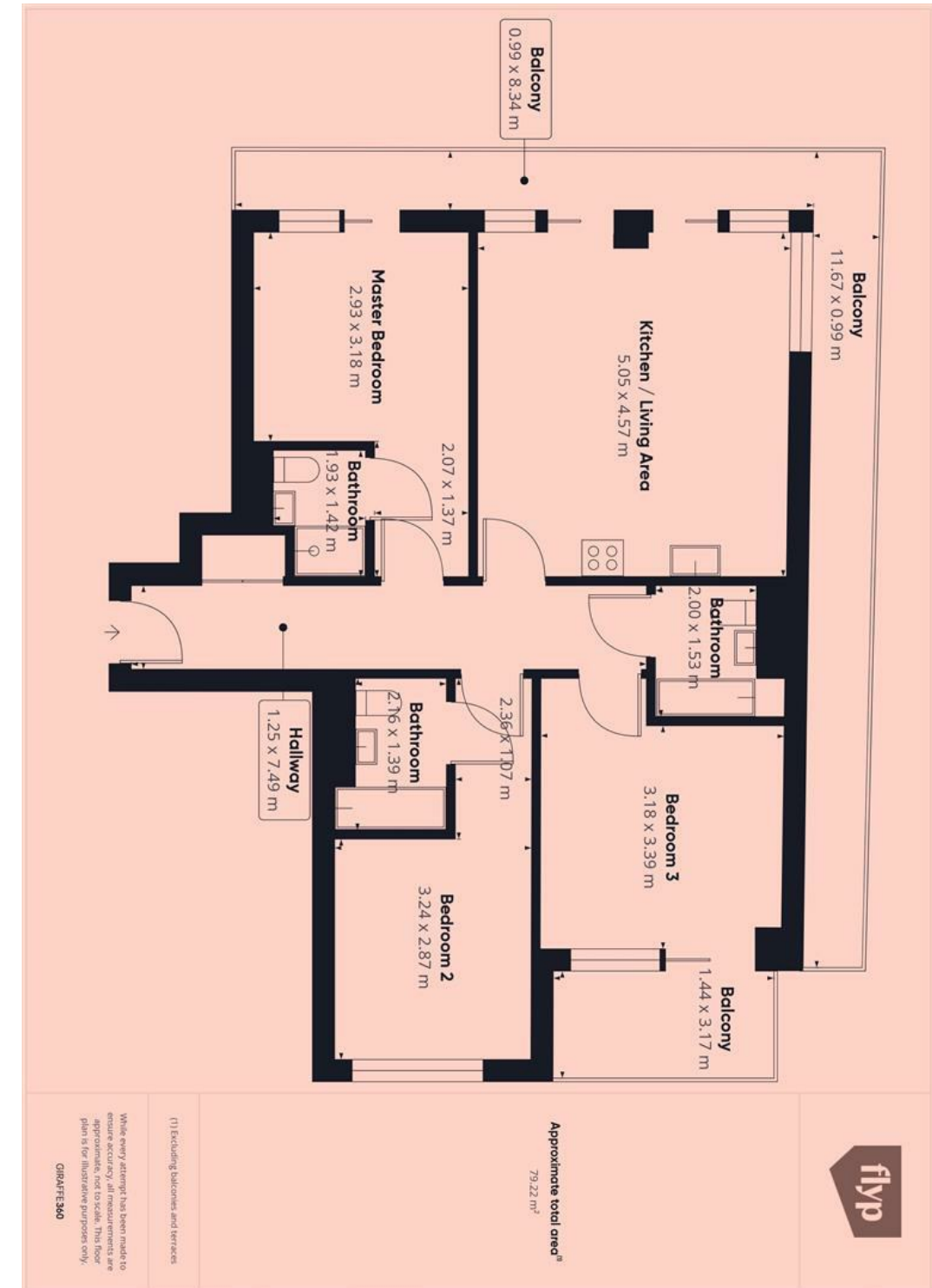


Manor Park Road, NW10 4JW

Competitively priced... modern development of one, two & three bedroom apartments which have been completed to a high level of specification, with double glazed black framed glazing throughout, low voltage lighting and timber style floors.

This penthouse property offers a generous 828 sq/ft of living accommodation over one floor, comprising of an entrance Hall, low voltage lighting & timber style floors in the reception room, integrated appliances in a contemporary kitchen, fitted wardrobes in all three of the double bedrooms, and three modern fitted bathrooms two of which is en suite.

Located in close proximity to all shops and amenities of Harlesden. Excellent transport links including Harlesden and Willesden Junction Stations offering easy access into Central London. Roundwood Park with its Organic café is within a quarter of a mile away.



Tenure Leasehold - Share of Freehold

Price Asking Price £695,000 Subject to Contract

Viewing by appointment , through joint sole agents Warwick Estate Agents



Tel: +44 (0)2 8960 9988
Fax: +44 (0)2 8960 9989

Email: mail@warwickestateagency.co.uk
warwickestateagents.tv | warwickestateagents.co.uk

69 Chamberlayne Road, London NW10 3ND
Tel: +44 (0)20 8960 9988 Fax: +44 (0)20 8960 9989